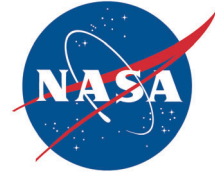


National Aeronautics and Space Administration

**John F. Kennedy Space Center**  
Kennedy Space Center, FL 32899



March 8, 2024

Reply to Attn of: SI-E3

Florida Division of Historical Resources  
and State Historic Preservation Officer  
Attn: Scott Edwards  
500 S. Bronough Street  
R. A. Gray Building  
Tallahassee, FL 32399-0250

Subject: Demolition of the Thrust Vector Control (TVC) Deservicing Building  
(8BR2008/66249) and Finding of Adverse Effect

Dear Mr. Edwards:

The National Aeronautics and Space Administration (NASA) at the Kennedy Space Center (KSC) is proposing to demolish the TVC Deservicing Building (8BR2008/66249), the Drum Storage Building (66266), and the Tank Farm Area (66267) as part of its Fiscal Year 2024 Demolition Activities. These resources are no longer required to support future mission objectives by NASA or a commercial entity. This project involves the demolition of a historic property that is a contributing resource to two historic districts that are eligible for listing in the National Register of Historic Places (NRHP). Therefore, according to Stipulation II.C.1 and 7 of the *Programmatic Agreement Regarding the Management of Historic Properties at the Kennedy Space Center* (PA), this project requires consultation with the State Historic Preservation Officer (SHPO). Relevant images are provided as figures in the enclosure.

**Description of the Undertaking.** The undertaking involves the demolition of the TVC Deservicing Building (8BR2008/66249), the Drum Storage Building (66266), and the Tank Farm Area (66267). The Drum Storage Building and the Tank Farm Area are located immediately north of and associated with operations at the TVC Deservicing Building (Figure 1).

**Area of Potential Effects.** The Area of Potential Effects for the project involves the footprint of the facilities, as well as the viewshed from where they can be seen (Figure 2).

### **Identification of Historic Properties**

The **Thrust Vector Control (TVC) Deservicing Building** (8BR2008/66249), built in 1985, is a contributing resource to both the Solid Rocket Booster (SRB) Disassembly and Refurbishment Complex Historic District and the NASA-owned Cape Canaveral Air Force Station (CCAFS) Industrial Area Historic District (Figures 3 and 6). The building contributes to the districts in the context of the Space Shuttle Program (SSP) under Criterion A in the area of Space Exploration and Criteria Consideration G because it achieved significance prior to 50 years of age. The TVC Deservicing Building housed equipment used to remove leftover fuel and TVC components from the SRB aft skirts after they were recovered and disassembled in the Hangar AF Complex.

The **Drum Storage Building** (66266) and **Tank Farm Area** (66267) built in 1994, supported operations at the TVC Deservicing Building (Figures 4 and 5). They were not part of the original TVC Deservicing Building design and are a later addition to the property. The buildings were surveyed in 2013 (Florida Master Site File (FMSF) Survey No. 20760) and determined ineligible for the NRHP. SHPO concurred with this determination on March 3, 2014 (Project File No. 2014-0521). No new information exists that would warrant reevaluation at this time and NASA KSC asserts that they are both still ineligible for the NRHP and do not contribute to a historic district.

The **SRB Disassembly and Refurbishment Complex Historic District** (8BR1996) (also known as the Hangar AF Complex) is eligible for the NRHP in the context of the SSP under Criterion A in the area of Space Exploration and Criteria Consideration G because it achieved significance prior to 50 years of age. Most of the structures within the historic district were specifically designed for processing the SSP's SRBs, from pre-launch manufacture and assembly to post-launch recovery, disassembly, cleaning, and refurbishment in preparation for their next use (Figure 6).

The **NASA-owned CCAFS Industrial Area Historic District** (8BR3073) is eligible for the NRHP under Criterion A in the area of Space Exploration for its association with significant events in the history of NASA's manned and unmanned space programs. The district is also eligible under Criterion C as a unified group of facilities that share distinctive architectural characteristics. The district contains facilities that are associated with several significant NASA programs, including the unmanned Expendable Launch Vehicle Program (1960-present), Project Mercury (1959-1963), the Apollo Program (1963-1972), and the Space Shuttle Program (SSP) (1969-2011). The district contains a concentration of NASA-owned buildings, which share standardized architectural design, color, and function. The district's identity is further expressed by the proximity and interrelationship of its buildings, which conveys the overall historic environment and functionality of the district (Figure 6).

The **CCAFS Industrial Area Historic District** (8BR3369) is eligible for the NRHP under Criterion A for its contribution to the U.S. defense and civilian missile and space programs. The district is also eligible under Criterion C for its missile assembly facility architectural style containing support structures required for testing and launching missiles and spacecraft. The district is dominated by missile assembly buildings, also called hangars (Figure 6).

No known archaeological sites exist within the project area and all work will take place within previously developed and disturbed areas within the footprint of the existing building complex. This area has a low potential for archaeological sites as identified in a 2019 Phase I Archaeological Survey of CCAFS and concurred on by SHPO on February 17, 2019 (FMSF Survey No. 27738/Project File No. 2020-0555).

### **Effects Findings**

#### *Demolition of the TVC Deservicing Building*

In 2012, NASA KSC consulted on the demolition of TVC Deservicing Building and determined that the demolition constituted an **Adverse Effect** to the Solid Rocket Booster (SRB) Disassembly and Refurbishment Complex Historic District and this contributing resource. Mitigation, which was a Historic American Engineering Record (HAER) Level II, was completed for the district in 2011 (HAER FL-8-11-S). The HAER was accepted by SHPO on November 18, 2013 and NPS on February 6, 2014. SHPO concurred that the HAER adequately mitigated for the adverse effects (Project File No. 2012-5407).

NASA KSC has determined that the demolition of the TVC Deservicing Building would constitute an **Adverse Effect** to the NASA-owned CCAFS Industrial Area Historic District. This would be the third contributing resource to be demolished in the district which originally consisted of 9 contributing resources. Extant contributing resources include the Missile Assembly Building AE (8BR2976), Hangar AF (8BR2001), Hangar S (8BR3070), and the Engineering and Operations Building (8BR2975), Hangar N (8BR3069), and the Little N Storage Building (8BR2190). Between 2011 and 2015, NASA KSC completed HAER and Historic American Buildings Survey (HABS) for all of the contributing resources in the district, except for the Hangar N and Little N Storage Building, due to their transfer to CCAFS in 2015. Both SHPO and NPS accepted all HABS/HAER (HABS Level II FL-583-C, D and F; HABS Level III FL-583-E; HAER Level II FL-8-B). NASA KSC notes that adverse effects have been adequately mitigated through the completion and acceptance of the referenced HABS/HAER documentation pursuant to Stipulation V.A.3 of the PA.

NASA KSC has determined that the demolition of the TVC Deservicing Building would have **No Adverse Effect** to the CCAFS Industrial Area Historic District (8BR3369) since it is not a contributing resource to the district. While the structure is within the viewshed of the district, its demolition would not impact that CCAFS Industrial Area Historic District's architectural cohesion or ability to convey its significance to the U.S. defense and civilian missile and space programs.

*Demolition of the Drum Storage Building and Tank Farm Area*

The demolition of the Drum Storage Building and Tank Farm Area would have **No Effect to Historic Properties** since the buildings are not individually ineligible for the NRHP and **No Adverse Effect** to the three noted historic districts. While the two structures are within the viewshed of the three noted historic districts, their demolition would not impact those districts' ability to represent a unified group of facilities that share distinctive architectural characteristics and/or their significance in defense and space programs.

Consulting Parties are identified below and may submit comments to NASA KSC. NASA KSC will also be posting this document to its public facing site for public review and comment.

NASA KSC has determined that, overall, this undertaking will constitute an **Adverse Effect** to historic properties and that the adverse effects have been adequately mitigated through previous HABS/HAER documentation. NASA KSC requests your concurrence with these findings and determinations.

If you have any questions or require further assistance, please contact me at 321-867-8454.

Sincerely,

**Katherine Zeringue** Digitally signed by Katherine  
Zeringue  
Date: 2024.03.08 08:32:21 -05'00'

---

Katherine Zeringue  
Cultural Resources Manager

Enclosure:  
TVC Deservicing Building Demo Figure Sheets

cc:

HQS FPO/R. Klein  
KSC/SI-E3/D. Dankert  
KSC/AD/D. Thorpe  
KSD/AD/J. Krouchick  
KSC/CC/T. Tezel  
KSC/SI-C2/R. Griffin

Consulting Parties:

FWS/T. Penn  
FWS/R. Kanaski  
NPS/K. Kneifl  
CCSFS/MS-9125/T. Penders  
Apollo One Memorial Foundation, Inc.  
Brevard County Historical Commission  
Cape Canaveral Space Force Museum  
Florida Public Archaeological Network – East Central Region  
Historical Society of North Brevard  
Indian River Anthropological Association  
North Brevard Heritage Foundation  
South Brevard Historical Society

TVC Deservicing Building Demo Figure Sheets



Figure 1. TVC Deservicing Building, Drum Storage Building, and Tank Farm Area.



Figure 2. Area of Potential Effects (APE). Yellow star is the location of the TVC Deservicing Building, Drum Storage Building, and Tank Farm Area.



Figure 3. TVC Deservicing Building.



Figure 4. Drum Storage Building. Tank Farm Area is on the right.





Figure 5. Tank Farm Area. Drum Storage Building is on the left.

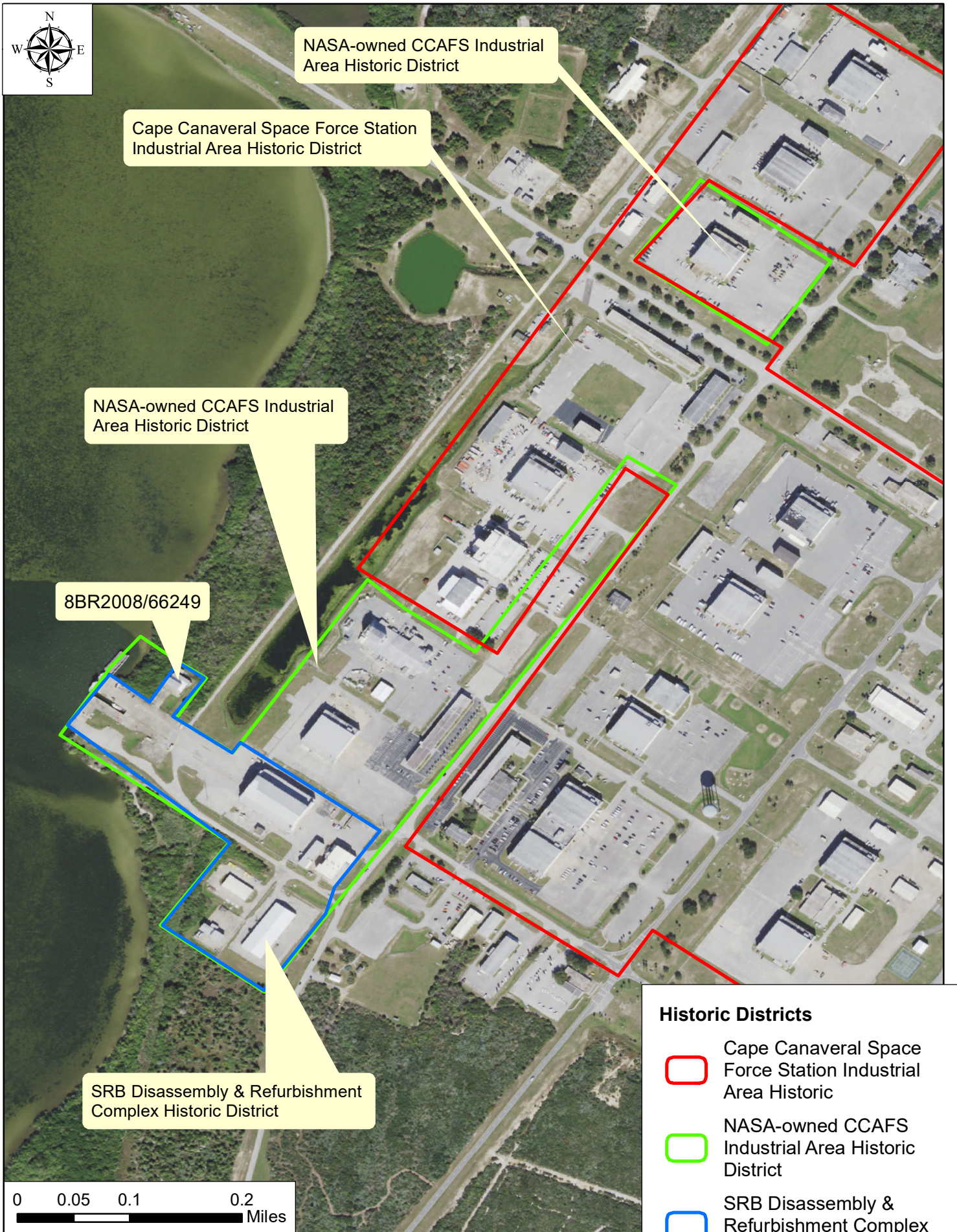


Figure 6. Historic Districts Identified in the APE.

**Historic Districts**

- Cape Canaveral Space Force Station Industrial Area Historic
- NASA-owned CCAFS Industrial Area Historic District
- SRB Disassembly & Refurbishment Complex Historic District